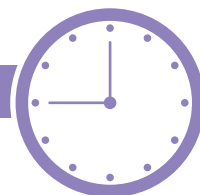


Fiscal Year 2025



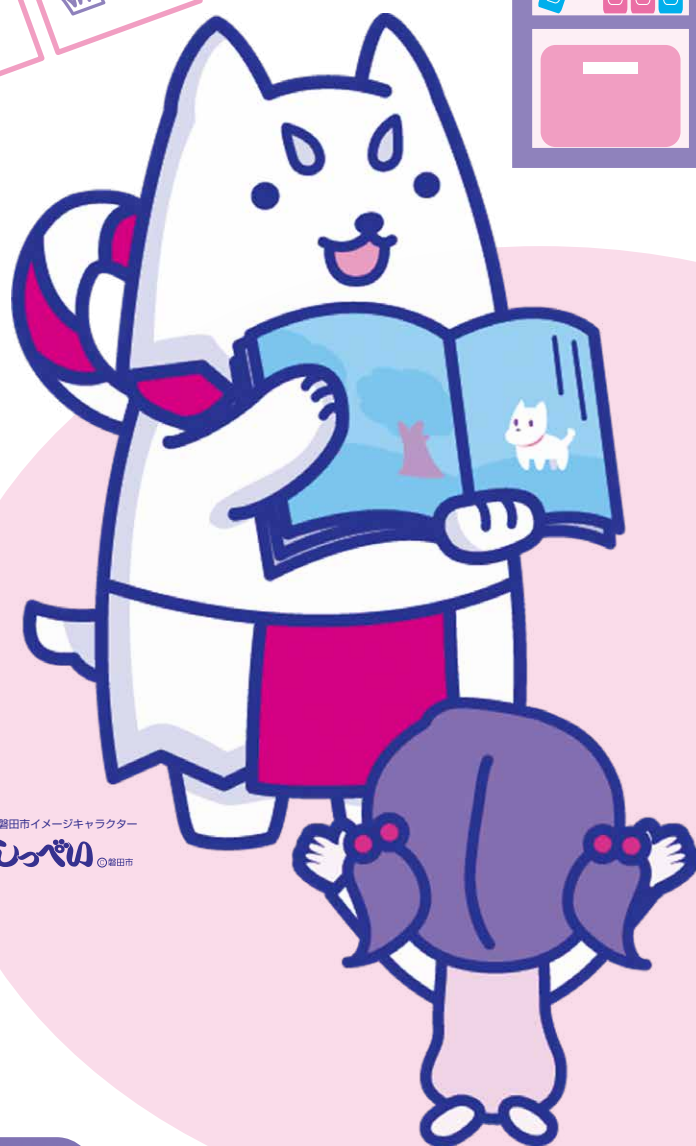
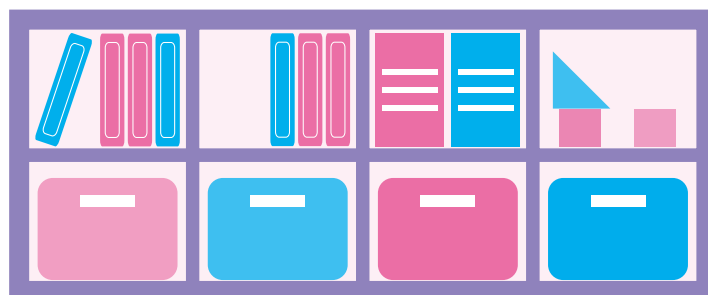
Iwata City Information on Hoikuen, Yōchien, etc.

Nintei
Kodomoen

Hoikuen

Chiikigata
Hoiku

Yōchien



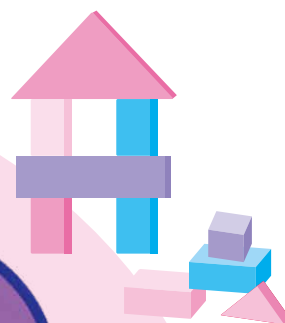
磐田市イメージキャラクター
にっぺぽ © 磐田市

Nintei Kodomoen

Hoikuen

Chiikigata Hoiku

Yōchien



これからも もっと
ずっと いわた
20
20th Anniversary
IWATA CITY

 Iwata city

2nd Edition

Published in April 1st, 2025

<Type of facility>

Nintei Kodomoen(0-5 years old)

- A facility that combines the functions and characteristics of a nursery school and kindergarten
- All children aged 3 to 5 receive education and childcare together, regardless of the working conditions of their parents/guardians.
- Even if the working conditions change, such as when a parent/guardian retires, the child can continue attending the kindergarten where the child is familiar to (3 to 5 years old only).

Hoikuen (0-5 years old)

- A facility that provides childcare and education on behalf of parents/guardians who cannot provide childcare at home due to work, etc.
- In addition to childcare until the evening, extended childcare is provided by the preschool.
- Parents/guardians who can use: Parents/guardians who cannot take care of their children at home, such as double-income households.

Chiikigata Hoiku (0-2 years old)

- A facility that cares for children aged 0 to 2 in smaller numbers than a nursery school
- In addition to childcare until the evening, extended childcare is provided by the preschool.
- Parents/guardians who can use: Parents/guardians who cannot take care of their children at home, such as double-income households.

Yōchien (3-5 years old)

- A facility that provides early childhood education to lay the foundation for elementary school education.
- Parents/guardians who can use: No restrictions

<How to read the explanation of each facility>

21 Kōnotori Hoikuen

〒438-0077 Iwata-shi Kounodai 84-3

0538-32-4732 FAX 0538-33-0023

http://www.seirei.or.jp/nurseryschool/konotori/




Institution

Children under custody

Opening hours

Short-time childcare

School lunch

Seirei Social Welfare Corporation (Shikai Fukushima Hōjin Seirei Fukushimajigyōdan)

120 children (0-year-old child after maternity leave to 5-year-old child)

Weekdays 7:00 to 19:00 (18:00 to 19:00)

Saturdays 7:00 to 18:00

* Accepted from 0-year-olds (by consultation depending on how many months of age)

8:30 to 16:30

Complete school lunch

- [Opening hours]

Basic opening hours of each facility (changes depending on events, etc.)

() Inside this, the period of time requires an additional charge.

※ If you require childcare on early morning or evening, an additional fee will be charged depending on the preschool. Please confirm with each preschool directly for details.
- ★The time spent in the nursery school is determined by the time required for childcare, such as the working hours of parents/guardians.

[Childcare standard time]

Usage time assuming full-time work etc.

[Short-time childcare]

Usage time assuming part-time work etc.



NINTEI KODOMOEN

1 Iwata Shiritsu Ōfuji Kodomoen

〒438-0002 Iwata-shi Okubo 640-5

0538-38-0824 FAX 0538-38-3612

ofuji-c@city.iwata.lg.jp




Administration

Number of children

Opening hours

Short-time childcare

School lunch

Iwata City

Kindergarten frame 45 children

Nursery school frame 45 children (3 to 5 years old)

Weekdays Kindergarten frame 8:30-16:30 (Daycare: 14:00-16:30)

Nursery school frame 7:30-18:30

*Both are closed on Saturdays, Sundays, and public holidays

8:30-16:30 (Nursery school frame)

Yes

※Considering integration with Mukasa Kindergarten in 2027 (Reiwa 9).

3 Iwata Shiritsu Toyoda Minami Kodomoen

〒438-0834 Iwata-shi Morishita 280

0538-35-5695 FAX 0538-35-5766

toyodaminami-c@city.iwata.lg.jp




Administration

Number of children

Opening hours

Short-time childcare

School lunch

Iwata City

Kindergarten frame 75 children

Nursery school frame 60 children (3 to 5 years old)

Weekdays Kindergarten frame 8:30 to 16:30 (Daycare: 14:00 to 16:30)

Nursery school frame 7:30 to 18:30

*Both are closed on Saturdays, Sundays, and holidays

8:30-16:30 (nursery school frame)

Yes

5 Iwata Shiritsu Toyooka Kodomoen

〒438-0113 Iwata-shi Shinkai 541

0539-62-2545 FAX 0539-62-3390

toyooka-c@city.iwata.lg.jp




Administration

Number of children

Opening hours

Short-time childcare

School lunch

Drop-off and pick-up

Iwata City

Kindergarten frame 45 children

Nursery school frame 45 children (3 to 5 years old)

Weekdays Kindergarten frame 8:30 to 16:30 (Daycare: 14:00 to 16:30)

Nursery school frame 7:30 to 18:30

* Both are closed on Saturdays, Sundays, and holidays

8:30-16:30 (Nursery school frame)

Yes

Bus transfer available (kindergarten frame)

2 Iwata Shiritsu Iwata Nakayoshi Kodomoen

〒438-0078 Iwata-shi Nakaizumi 2522-2

0538-35-5644 FAX 0538-36-3513

iwatanakayoshi-c@city.iwata.lg.jp




Administration

Number of children

Opening hours

Short-time childcare

School lunch

Iwata City

Kindergarten frame 90 children

Nursery school frame 90 children (3 to 5 years old)

Weekdays Kindergarten frame 8:30 to 16:30 (Daycare: 14:00 to 16:30)

Nursery school frame 7:30 to 18:30

*Both are closed on Saturdays, Sundays, and holidays

8:30-16:30 (Nursery school frame)

Yes

4 Iwata Shiritsu Seijō Kodomoen

〒438-0815 Iwata-shi Nakada 610

0538-32-6739 FAX 0538-32-6771

seijo-c@city.iwata.lg.jp




Administration

Number of children

Opening hours

Short-time childcare

School lunch

Iwata City

Kindergarten frame 75 children

Nursery school frame 60 children (3 to 5 years old)

Weekdays Kindergarten frame 8:30 to 16:30 (Daycare: 14:00 to 16:30)

Nursery school frame 7:30 to 18:30

*Both are closed on Saturdays, Sundays, and holidays

8:30-16:30 (nursery school frame)

Yes

6 Iwata Shiritsu Fukude Kodomoen

〒437-1204 Iwata-shi Fukudenakajima 55

0538-55-2323 FAX 0538-55-2256

fukude-c@city.iwata.lg.jp




Administration

Number of children

Opening hours

Short-time childcare

School lunch

Drop-off and pick-up

Iwata City

Kindergarten frame 150 children

Nursery school frame 150 children (6 months to 5 years old)

Weekdays Kindergarten frame 8: 30-16: 30 (Daycare: 14: 00-16: 30)

Nursery school frame 7:15-18:30

Saturday nursery school frame 7:15-18:00

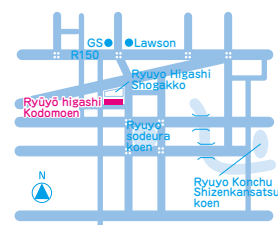
8:30-16:30 (nursery school frame)

Yes

Bus transfer available (kindergarten frame)

7 Iwata Shiritsu Ryūyō Higashi Kodomoen

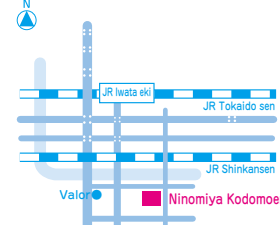
〒438-0218 Iwata-shi Nakahiramatsu 30-4
0538-66-2907 FAX 0538-67-8510
ryuyohigashi-c@city.iwata.lg.jp



Administration Iwata City
Number of children Kindergarten frame 15 children (3 to 5 years old)
Nursery school frame 100 children (6 months to 5 years old)
Opening hours Weekdays Kindergarten frame 8:30 to 16:30 (Daycare: 14:00 to 16:30)
Nursery school frame 7:15-18:30
Saturday nursery school frame 7:15-18:00
Short-time childcare 8:30-16:30 (nursery school frame)
School lunch Yes

8 Iwata Shiritsu Ninomiya Kodomoen

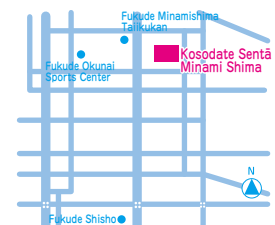
〒438-0074 Iwata-shi Ninomiya 962-1
0538-32-3460 FAX 0538-34-2239
ninomiyahoiku@city.iwata.lg.jp



Administration Iwata City
Number of children Kindergarten frame 9 children (3 to 5 years old)
Nursery School frame 99 children (11 months to 5 years)
Opening hours Weekdays Kindergarten 8:30-16:30 (Azukari hoiku 14:00-16:30)
Nursery School frame 7:15-18:30
Saturday nursery school frame 7:15-18:00
Short-time childcare 8:30-16:30 (nursery school frame)
School lunch Yes

13 Kosodate Sentā Minami Shima

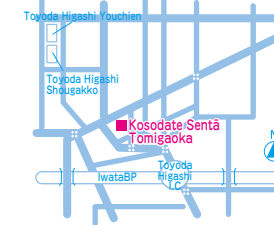
〒437-1209 Iwata-shi Minamishima 164-1
0538-55-6255 FAX 0538-55-6254
http://www.tenryu-kohseikai.or.jp/children/minamishima



Administration Social Welfare Corporation Tenryu Welfare Association (Shakai Fukushi Hōjin Tenryūkōseikai)
Number of children Kindergarten frame 3 children (3 to 5 years old)
Nursery school frame 140 children
(0-year-old children after maternity leave to 5-year-old children)
Opening hours Weekdays Kindergarten frame 8:00 to 18:00 (Childcare: 8:00 to 8:30, 14:00 to 18:00)
Nursery school frame 7:00 to 20:00 (18:00 to 20:00)
Saturday nursery school frame 7:00 to 20:00 (18:00-20:00)
Nursery school frame 8:30-16:30 (extended childcare 7:00-8:30, 16:30-20:00)
Short-time childcare Yes
School lunch Yes

14 Kosodate Sentā Tomigaoka

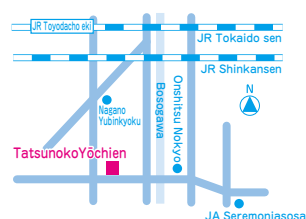
〒438-0803 Iwata-shi Tomigaoka 162-1
0538-35-2524 FAX 0538-35-2547
http://www.tenryu-kohseikai.or.jp/children/tomigaoka



Administration Social Welfare Corporation Tenryu Welfare Association (Shakai Fukushi Hōjin Tenryūkōseikai)
Number of children Kindergarten frame 6 children (3 years old to 5 years old)
Nursery school frame 90 children
(0 years old child after maternity leave to 5 years old)
Opening hours Weekday Kindergarten frame 8:00 to 18:00 (Childcare: 8:00 to 8:30, 14:00 to 18:00)
Nursery school frame 7:00 to 19:30 (18:00 to 19:30)
Saturday nursery school frame 7:00 to 19:30 (18:00 to 19:30)
Nursery school frame 8:30 to 16:30 (extended childcare 7:00 to 8:30, 16:30-19:30)
Short-time childcare Yes
School lunch Yes

9 Tatsunoko Yōchien

〒438-0068 Iwata-shi Maeno 2575
0538-35-5144 FAX 0538-35-5141
https://www.tatsunoko.ed.jp



Administration Tatsunoko Academy School (Tatsunoko Gakuen)
Number of children Kindergarten frame 120 children (3 to 5 years old)
Nursery school frame 60 children (11 months to 5 years old)
Opening hours Weekdays Kindergarten frame 8:00-17:00 (Daycare: 15:00-17:00)
Nursery school frame 7:00 to 19:00 (7:00 to 7:30, 18:30 to 19:00)
Saturday nursery school frame 7:00 to 18:00
8:00 to 16:00 (nursery school frame)
Short-time childcare Yes
School lunch Yes
Drop-off and pick-up Bus transfer available (No. 1 and 2)

10 Seirei Kodomoen Kōnotori Toyoda

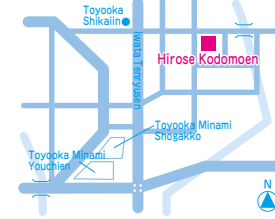
〒438-0823 Iwata-shi Shimohongou 1055
0538-35-2523 FAX 0538-35-2525
http://www.seirei.or.jp/nurseryschool/kounotoritoyoda/



Administration Seirei Social Welfare Corporation (Shakai Fukushi Hōjin Seirei Fukushimaijyōdan)
Number of children Kindergarten frame 15 children (3 to 5 years old)
Nursery school frame 140 children
(0-year-old children after maternity leave to 5-year-old children)
Opening hours Weekdays Kindergarten frame 7:00-16:30 (Childcare: 7:00-8:30, 14:00-16:30)
Nursery school frame 7:00 to 19:00 (18:00 to 19:00)
Saturday nursery school frame 7:00 to 18:00
8:30 to 16:30 (nursery school frame)
Short-time childcare Yes
School lunch Yes

15 Hirose Kodomoen

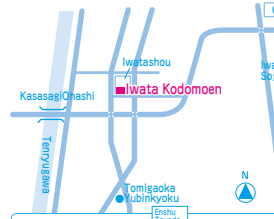
〒438-0115 Iwata-shi Kamikanzo 460-1
0539-62-2104 FAX 0539-62-6610
http://www.hirosekodomoen.jp/



Administration Social Welfare Corporation Entsū Welfare Society (Shakai Fukushi Hōjin Entsū Fukushimai-kai)
Number of children Kindergarten frame 6 children (3 years old to 5 years old)
Nursery school frame 168 children
(0-year-old children after maternity leave to 5-year-old children)
Opening hours Weekdays Kindergarten frame 8:00 to 18:00 (Childcare: 8:00 to 8:30, 14:00 to 18:00)
Nursery school frame 7:00 to 19:00 (18:00 to 19:00)
Saturday nursery school frame 7:00 to 18:00
8:00 to 16:00 (Nursery school frame)
Short-time childcare Yes
School lunch Yes

16 Iwata Kodomoen

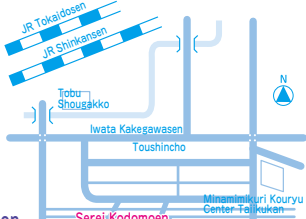
〒438-0004 Iwata-shi Sagisakanaka 987-2
0538-86-3881 FAX 0538-86-3882
https://iwatakodomo.com



Administration Zudaji Academy School Incorporated (Gakkō Hōjin Zudaji Gakuen)
Number of children Kindergarten frame 43 children (3 to 5 years old)
Nursery school frame 60 children (6 months to 5 years old)
Opening hours Weekdays Kindergarten frame 7:00-19:00 (Daycare: 7:00 to 8:00, 15:00 to 19:00)
Nursery school frame 7:00 to 19:00 (18:00 to 19:00)
Saturday kindergarten / nursery school frame 7:00 to 18:00
(* Kindergarten is charged separately)
Short-time childcare 8:00 to 16:00 (nursery school frame)
School lunch Yes

11 Seirei Kodomoen Kōnotori Higashi

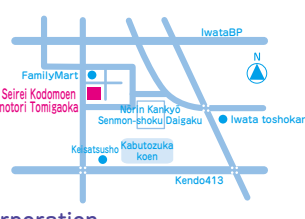
〒438-0035 Iwata-shi Higashiaraya 271-3
0538-35-8567 FAX 0538-21-1010
http://www.seirei.or.jp/nurseryschool/kounotorieast/



Administration Seirei Social Welfare Corporation (Shakai Fukushi Hōjin Seirei Fukushimaijyōdan)
Number of children Kindergarten frame 15 children (3 to 5 years old)
Nursery school frame 200 children
(0-year-old children after maternity leave to 5-year-old children)
Opening hours Weekdays Kindergarten frame 7:00-16:30 (Childcare: 7:00-8:30, 14:00-16:30)
Nursery school frame 7:00 to 19:00 (18:00 to 19:00)
Saturday nursery school frame 7:00 to 18:00
* Approximately from 1 year old (by consultation)
Short-time childcare 8:30-16:30 (nursery school frame)
School lunch Yes

12 Seirei Kodomoen Kōnotori Tomigaoka

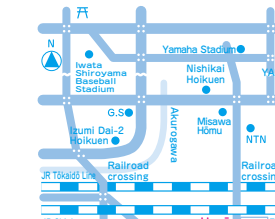
〒438-0803 Iwata-shi Tomigaoka 677-1
0538-31-6000 FAX 0538-36-0655
http://www.seirei.or.jp/nurseryschool/tomigaoka/



Administration Seirei Social Welfare Corporation (Shakai Fukushi Hōjin Seirei Fukushimaijyōdan)
Number of children Kindergarten frame 9 children (3 to 5 years old)
Nursery school frame 120 children
(0-year-old children after maternity leave to 5-year-old children)
Opening hours Weekdays Kindergarten frame 7:00-16:30 (Childcare: 7:00-8:30, 14:00-16:30)
Nursery school frame 7:00 to 19:00 (18:00 to 19:00)
Saturday nursery school frame 7:00 to 18:00
8:30 to 16:30 (nursery school frame)
Short-time childcare Yes
School lunch Yes

17 Harō Usagiyama

〒438-0037 Iwata-shi Higashi Kaizuka 205-1
0538-37-2100
The website is currently under construction, please check out our Instagram.



Administration Shakai Fukushi Hōjin Aikōkai
Number of children Kindergarten frame 60 children (3 to 5 years old)
Nursery school frame 84 children (4 months to 5 years old)
Opening hours Weekdays Kindergarten frame 7:30 to 18:00 (Daycare: 7:30 to 9:00, 14:00 to 18:00)
Nursery school frame 7:00 to 19:00 (18:00 to 19:00)
Saturday Nursery school frame 7:00 to 18:00
8:30 to 16:30 (Nursery school frame)
Short-time childcare Yes
School lunch Yes



18 Iwata Shiritsu Iwata Kita Hoikuen

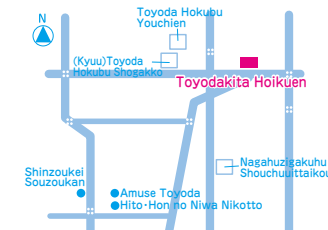
〒438-0086 Iwata-shi Mitsuke 2367-1
0538-32-2807 FAX 0538-34-2453
iwata-kitahoiku@city.iwata.lg.jp



Administration Iwata City
Number of children 90 children (11 months to 5 years old)
Opening hours Weekdays 7:15 to 18:30
Saturdays 7:15 to 18:00
Short-time childcare 8:30 to 16:30
School lunch Yes

19 Iwata Shiritsu Toyoda Kita Hoikuen

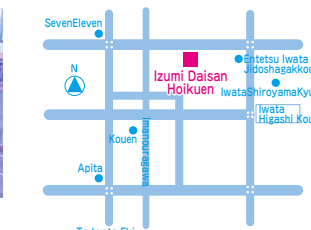
〒438-0804 Iwata-shi Kamo 930
0538-32-4654 FAX 0538-30-7875
toyoda-kitahoiku@city.iwata.lg.jp



Administration Iwata City
Number of children 120 children (6 months to 5 years old)
Opening hours Weekdays 7:15 to 18:30
Saturdays 7:15 to 18:00
Short-time childcare 8:30 to 16:30
School lunch Yes
※Scheduled to be privatized and integrated with Toyoda Hokubu Yochien in FY2026 [R8 nendo].
[Established by: Shakai Fukushima Hōjin, Hamamatsu Jidō Fukushima]
Scheduled to open on April 1st, 2026 [R8 nen].

24 Izumi Daisan Hoikuen

〒438-0086 Iwata-shi Mitsuke 5018-5
0538-39-1050 FAX 0538-37-0663
https://izumi3.jp



Administration Social Welfare Corporation Shion Association
(Shakai Fukushima Hōjin Shion-kai)
Number of children 150 children
(0-year-old children after maternity leave to 5-year-old children)
Opening hours Weekdays 7:00 to 19:00 (18:40 to 19:00)
Saturdays 7:00 to 18:00 * 1 year old class and above
Short-time childcare 8:30 to 16:30
School lunch Yes

25 Nishikai Hoikuen

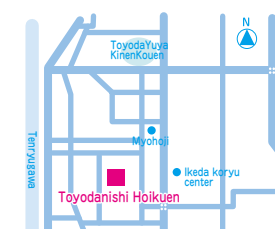
〒438-0026 Iwata-shi Nishikaizuka 3037
(Hoikuen) 0538-32-3975 FAX 0538-32-7510
(Exclusive use for temporary childcare) 0538-32-7070
https://www.nishikaihoikuen.net/



Administration Social Welfare Corporation Futaba Association
(Shakai Fukushima Hōjin Futaba-kai)
Number of children 96 children (0-year-old children after maternity leave to 5-year-old children)
Opening hours Weekdays 7:00 to 19:00 (18:00 to 19:00)
Saturdays 7:00 to 18:00 * 1 year old class and above
Short-time childcare 8:30 to 16:30
School lunch Yes

20 Iwata Shiritsu Toyoda Nishi Hoikuen

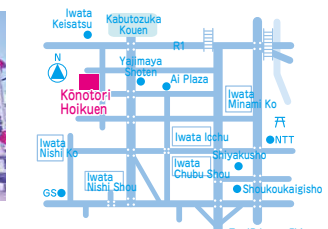
〒438-0805 Iwata-shi Ikeda 871
0538-32-3929 FAX 0538-30-7275
toyoda-nishihoiku@city.iwata.lg.jp



Administration Iwata City
Number of children 90 children (11 months to 5 years old)
Opening hours Weekdays 7:15 to 18:30
Saturdays 7:15 to 18:00
Short-time childcare 8:30 to 16:30
School lunch Yes

21 Kōnotori Hoikuen

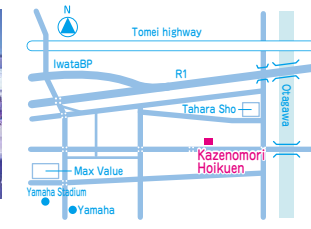
〒438-0077 Iwata-shi Kounodai 84-3
0538-32-4732 FAX 0538-33-0023
http://www.seirei.or.jp/nurseryschool/kounotori/



Administration Seirei Social Welfare Corporation (Shakai Fukushima Hōjin Seirei Fukushimajijyōdan)
Number of children 120 children (0-year-old child after maternity leave to 5-year-old child)
Opening hours Weekdays 7:00 to 19:00 (18:00 to 19:00)
Saturdays 7:00 to 18:00
* Accepted from 0-year-olds
(by consultation depending on how many months of age)
Short-time childcare 8:30 to 16:30
School lunch Yes

26 Kazenomori Hoikuen

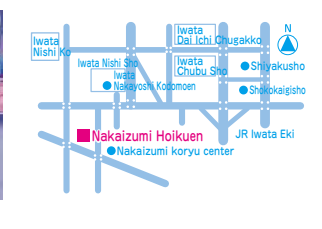
〒438-0027 Iwata-shi Mikano 1169
0538-86-6000 FAX 0538-86-6001
https://www.kazenomorihoikuen.net/



Administration Social Welfare Corporation Futaba Association
(Shakai Fukushima Hōjin Futaba-kai)
Number of children 150 children (0-year-old children after maternity leave to 5-year-old children)
Opening hours Weekdays 7:00 to 19:00 (18:00 to 19:00)
Saturdays 7:00 to 18:00 * 1 year old class and above
Short-time childcare 8:30 to 16:30
School lunch Yes

27 Nakaizumi Hoikuen

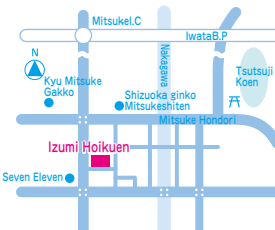
〒438-0078 Iwata-shi Nakaizumi 2414-1
0538-33-3400 FAX 0538-33-3399
http://nakaizumihoikuen.web.fc2.com/



Administration Social Welfare Corporation Shōei Association
(Shakai Fukushima Hōjin Shōei-kai)
Number of children 90 children (0-year-old children after maternity leave to 5-year-old children)
Opening hours Weekdays 7:00 to 19:00 (18:00 to 19:00)
Saturdays 7:00 to 18:00 * 1 year old class and above
Short-time childcare 8:00 to 16:00
School lunch Yes

22 Izumi Hoikuen

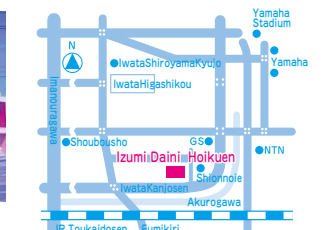
〒438-0086 Iwata-shi Mitsuke 2693
0538-36-6357 FAX 0538-36-6356
http://www.izumi.shionkai.jp/



Administration Social Welfare Corporation Shion Association
(Shakai Fukushima Hōjin Shion-kai)
Number of children 90 children (0-year-old child after maternity leave to 5-year-old children)
Opening hours Weekdays 7:00 to 19:00 (18:40 to 19:00)
Saturdays 7:00 to 18:00
* 1 year old class and above
Short-time childcare 8:30-16:30
School lunch Yes

23 Izumi Daini Hoikuen

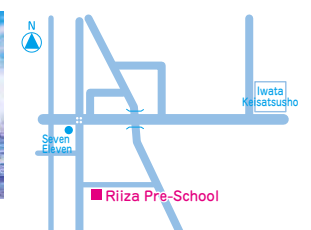
〒438-0084 Iwata-shi Kinosaki 1-2354-2
0538-35-3326 FAX 0538-36-1744
http://izumikko2.com/



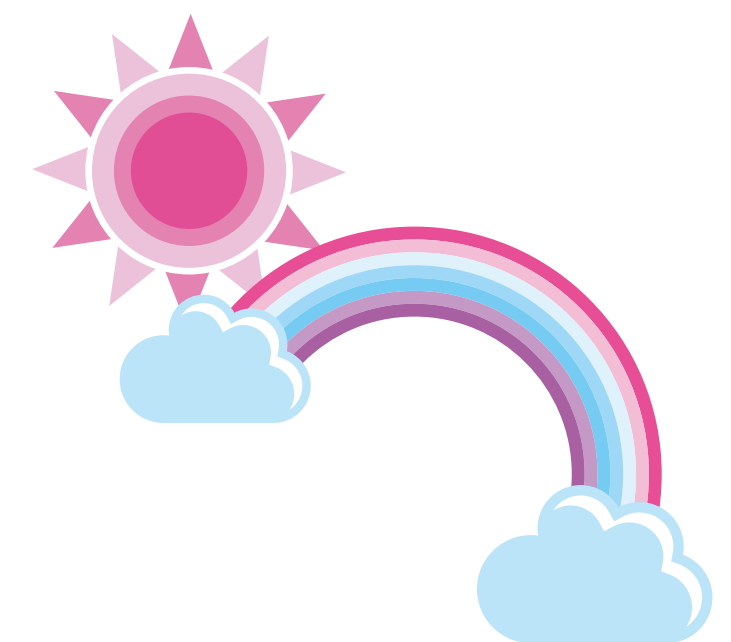
Administration Social Welfare Corporation Shion Association
(Shakai Fukushima Hōjin Shion-kai)
Number of children 120 children
(0-year-old children after maternity leave to 5-year-old children)
Opening hours Weekdays 7:00 to 19:00 (18:40 to 19:00)
Saturdays 7:00 to 18:00 * 1 year old class and above
Short-time childcare 8:30 to 16:30
School lunch Yes

28 Riiza Pre-School

〒438-0811 Iwata-shi Hitokoto 1490
0538-24-7870 FAX 0538-24-7871
https://jidoufukusien.or.jp/

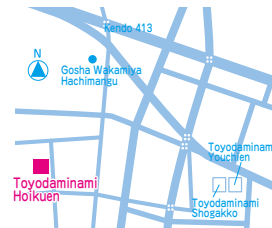


Administration Social Welfare Corporation Hamamatsu Children's Welfare Preschool
(Shakai Fukushima Hōjin Hamamatsu Jidō Fukushima-en)
Number of children 93 children (6 months to 5 years old)
Opening hours Weekdays 7:00 to 19:00 (18:00 to 19:00)
Saturdays 7:00 to 18:00 * 1 year old class and above
Short-time childcare 8:30 to 16:30
School lunch Yes



29 Toyoda Minami Hoikuen

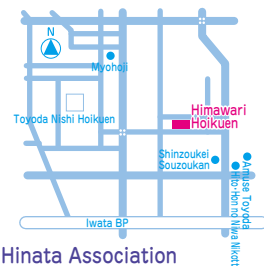
〒438-0835 Iwata-shi Toyodanishinoshima 552
0538-32-3078 FAX 0538-36-9238
<https://toyodaminami.ednet.jp/>



Administration Social Welfare Corporation Someha Association (Shakai Fukushi Hōjin Someha-kai)
Number of children 168 children
(0-year-old children after maternity leave to 5-year-old children)
Opening hours Weekdays 7:00 to 19:00 (18:00 to 19:00)
Saturdays 7:00 to 18:00 * 1 year old class and above
Short-time childcare 8:30 to 16:30
School lunch Yes

30 Himawari Hoikuen

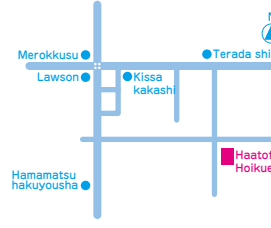
〒438-0831 Iwata-shi Kamiaraya 457-1
0538-35-5658 FAX 0538-24-7722
<http://himawari2007.ec-net.jp/>



Administration Social Welfare Corporation Hinata Association (Shakai Fukushi Hōjin Hinataikai)
Number of children 90 children
(0-year-old children after maternity leave to 5-year-old children)
Opening hours Weekdays 7:00 to 19:00 (18:10 to 19:00)
Saturdays 7:00 to 18:00 * 1 year old class and above
Short-time childcare 8:30 to 16:30
School lunch Yes

34 Haatofuru Hoikuen (Small-scale daycare)

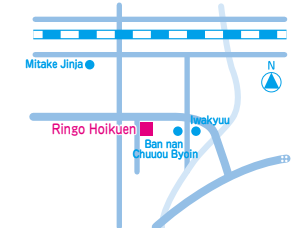
〒438-0047 Iwata-shi Toyoshima 1493-1
0538-36-1365 FAX 0538-36-1365(Same as TEL)
Em preparação na presente data.



Administration Ikeda Eriko (Ikeda Eriko)
Number of children 19 children
(6 months to the end of the fiscal year when they are 3 years old)
Opening hours Weekdays 7:30-18:30
Saturday desired childcare
Short-time childcare 8:30 to 16:30
School lunch Yes

35 Ringo Hoikuen (Small-scale daycare)

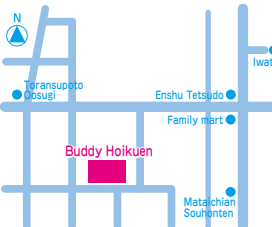
〒438-0814 Iwata-shi Kegojima 490-1
0538-33-4152 FAX 0538-33-4152(Same as TEL)
<http://www.ringohoikuen.jp/>



Administration Inomata Masayo (Inomata Masayo)
Number of children 19 children
(from the end of maternity leave to the end of the fiscal year when they are 3 years old)
Opening hours Weekdays 7:30-18:30
Saturday desired childcare (consultation required)
Short-time childcare 8:30 to 16:30
School lunch Yes

31 Buddy Hoikuen

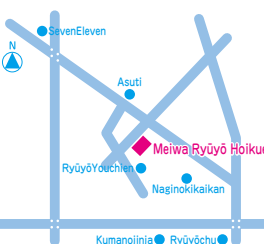
〒438-0086 Iwata-shi Mitsuke 1972-2
0538-37-6033 FAX 0538-74-7034
<http://ns.buddy-i.com/>



Administration Social Welfare Corporation Seifukai (Shakai Fukushi Hōjin Seifūkai)
Number of children 110 children
(0-year-old children after maternity leave to 5-year-old children)
Opening hours Weekdays 7:00 to 19:00 (18:01-19:00)
Saturday *Suitable for guardians' working hours: 1-year-old children class and above
Short-time childcare 8:30 to 16:30
School lunch Yes

32 Meiwa Ryūyō Hoikuen

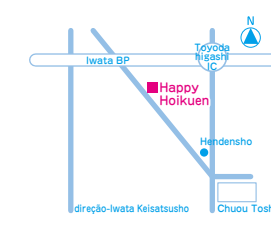
〒438-0231 Iwata-shi Toyooka 6605-61
0538-31-3188 FAX 0538-66-5221
<https://www.meiwakai.jp>



Administration Shakai Fukushi Hōjin Meiwakai
Number of children 204 children (6 months to 5 years old)
Opening hours Weekdays 7:00 to 19:00 (18:01 to 19:00)
Saturdays 7:00 to 18:00 *1-year-old children class and above
Short-time childcare 8:31 to 16:30
School lunch Yes

36 Happy Hoikuen (Small-scale daycare)

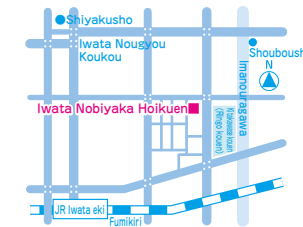
〒438-0803 Iwata-shi Tomigaoka 774-1
0538-30-7738 FAX 0538-30-7738(Same as TEL)
<http://plus-child.com/>



Administration Plus Co., Ltd. (Kabushikigaisha Purasu)
Number of children 19 children
(from the end of maternity leave to the end of the fiscal year when they are 3 years old)
Opening hours Weekdays 7:30 to 18:30
Saturdays and holidays desired childcare
Short-time childcare 8:30 to 16:30
School lunch Complete school lunch after the baby food period is completed

37 Iwata Nobiyaka Hoikuen (Small-scale daycare)

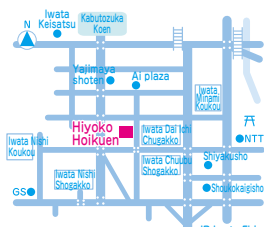
〒438-0073 Iwata-shi Ninomiya Higashi 9-4
0538-84-6653 FAX 0538-84-6653(Same as TEL)
<https://nobiya-hoikuen.jp/>



Administration GK Nobiyaka (Gōdōgaisha Nobiyaka)
Number of children 12 children
(6 months to the end of the fiscal year when they are 3 years old)
Opening hours Weekdays 7:30 to 18:30
Saturdays desired childcare
Short-time childcare 8:30 to 16:30
School lunch Yes

33 Hiyoko Hoikuen (Small-scale daycare)

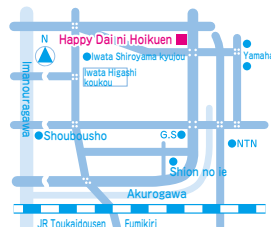
〒438-0077 Iwata-shi Kounodai 25-2
0538-30-6881 FAX 0538-30-6882
<http://www.aiei-hiyoko.jp/iwata>



Administration Aiei Co., Ltd. (Kabushikigaisha Aiei)
Number of children 19 children
(6 months to the end of the fiscal year when the child turned 3 years old)
Opening hours Weekdays 7:30 to 18:30
Saturdays desired childcare (consultation required)
Short-time childcare 8:30 to 16:30
School lunch Yes

38 Happy Daini Hoikuen (Small-scale daycare)

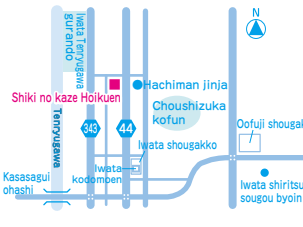
〒438-0088 Iwata-shi Fujimidai 4-3
0538-86-5550 FAX 0538-86-5550(Same as TEL)
<http://www.plus-child.com/>



Administration Plus Co., Ltd. (Kabushikigaisha Purasu)
Number of children 19 children
(from the end of maternity leave to the end of the fiscal year when they are 3 years old)
Opening hours Weekdays 7:30-18:30
Saturdays and holidays desired childcare
Short-time childcare 8:30 to 16:30
School lunch Complete school lunch after the baby food period is completed

39 Shikinokaze Hoikuen (Small-scale daycare)

〒438-0073 Iwata-shi Teradani 366-1
0538-38-2200 FAX 0538-38-2225
<https://www.shikinokazehoikuen.com>

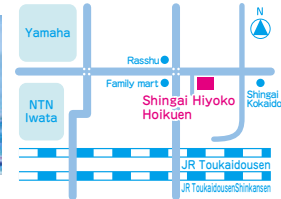


Administration General Incorporated Association Regional Support / Seiryū (Ippan Shadanhōjin Chiki Sasae Ai Seiryū)
Number of children 19 children
(from the end of maternity leave to the end of the fiscal year when they are 3 years old)
Opening hours Weekdays 7:00 to 19:30 (7:00 to 7:30, 18:30 to 19:30)
Saturdays and national holidays: "Kibō Hoiku"
Short-time childcare 8:30 to 16:30
School lunch Yes



40 Shingai Hiyoko Hoikuen (Small-scale daycare)

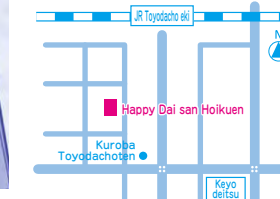
〒438-0025 Iwata-shi Shingai 1-19-3
0538-31-2600 FAX 0538-31-2601
http://aiei-hiyoko.jp/iwata



Administration Aiei Co., Ltd. (Kabushikigaisha Aiei)
Number of children 19 children
(6 months to the end of the fiscal year when the child turned 3 years old)
Opening hours Weekdays 7:30 to 18:30
Saturdays desired childcare (consultation required)
Short-time childcare 8:30 to 16:30
School lunch Yes

41 Happy Daisan Hoikuen (Small-scale daycare)

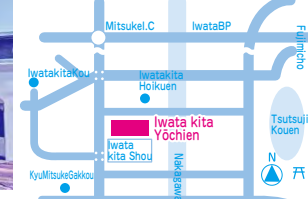
〒438-0822 Iwata-shi Kamihongo 1013-6
0538-31-2555 FAX 0538-31-2555 (Same as TEL)
http://www.plus-child.com/



Administration Plus Co., Ltd. (Kabushikigaisha Purasu)
Number of children 19 children
(from the end of maternity leave to the end of the fiscal year when they are 3 years old)
Opening hours Weekdays 7:30 to 18:30
Saturdays and holidays desired childcare
Short-time childcare 8:30 to 16:30
School lunch Complete school lunch after the baby food period is completed

46 Iwata Shiritsu Iwata Kita Yōchien

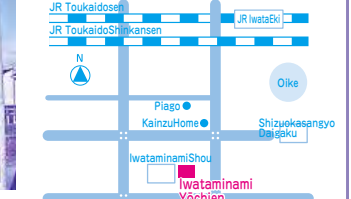
〒438-0086 Iwata-shi Mitsuke 2353-1
0538-32-3450 FAX 0538-36-3547
iwatakita-k@city.iwata.lg.jp



Administration Iwata City
Opening hours Weekdays 8:30 to 16:30 (Daycare: 14:00 to 16:30)
Closed on Saturdays, Sundays, and holidays
Spring / Summer / Winter holidays
(Childcare is available even during long holidays)
Uniform Yes
School lunch Yes
※Considering conversion to Kodomoen in 2026 (Reiwa 8).

47 Iwata Shiritsu Iwata Minami Yōchien

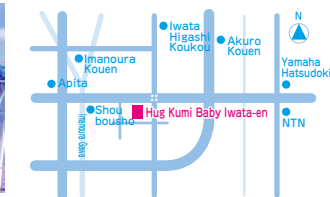
〒438-0057 Iwata-shi Senzudou 1075
0538-32-4316 FAX 0538-36-3597
iwataminami-k@city.iwata.lg.jp



Administration Iwata City
Opening hours Weekdays 8:30 to 16:30 (Daycare: 14:00 to 16:30)
Closed on Saturdays, Sundays, and holidays
Spring / Summer / Winter holidays
(Childcare is available even during long holidays)
Uniform Yes
School lunch Yes
※Considering conversion to Kodomoen in 2026 (Reiwa 8).

42 Hug Kumi Baby Iwata-en (Small-scale daycare)

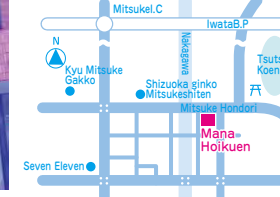
〒438-0084 Iwata-shi Kinosaki 2-7-9
0538-84-7703 FAX 0538-84-7713
https://www.you-jin.info/uihoiku/



Administration Yūjin Co., Ltd. (Kabushiki-gaisha Yūjin)
Number of children 19 children
(0 years old: From 6 months to the end of the fiscal year when the child turns 3 years old.)
Opening hours Weekdays 7:30 to 18:30
Saturdays desired childcare
Short-time childcare 8:30 to 16:30
School lunch Complete school lunch after the baby food period is completed

43 Mana Hoikuen (Small-scale daycare)

〒438-0086 Iwata-shi Mitsuke 1204
0538-31-8787 FAX 0538-31-8788
https://www.noppohoikuen.com/



Administration General Incorporated Association Mana
Number of children 19 children
(from the end of maternity leave to the end of the fiscal year when they are 3 years old)
Opening hours Weekdays 7:00 to 18:00
Saturday Only for those who request childcare.
Short-time childcare 8:00 to 16:00
School lunch Yes

48 Iwata Shiritsu Mukasa Yōchien

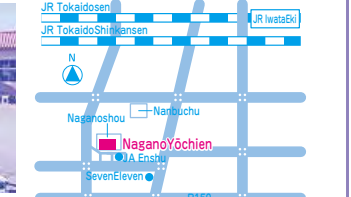
〒438-0013 Iwata-shi Mukasatakenouchi 397-13
0538-38-0456 FAX 0538-38-3615
mukasa-k@city.iwata.lg.jp



Administration Iwata City
Opening hours Weekdays 8:30 to 16:30 (Childcare: 14:00 to 16:30)
Closed on Saturdays, Sundays, and holidays
Spring / Summer / Winter holidays
(Childcare is available even during long holidays)
Uniform Yes
School lunch Yes
※Considering integration with Mukasa Kindergarten in 2027 (Reiwa 9).

49 Iwata Shiritsu Nagano Yōchien

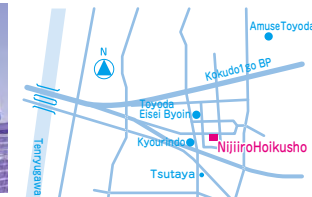
〒438-0056 Iwata-shi Kojima 362-2
0538-34-5813 FAX 0538-36-3490
nagano-k@city.iwata.lg.jp



Administration Iwata City
Opening hours Weekdays 8:30 to 16:30 (Daycare: 14:00 to 16:30)
Closed on Saturdays, Sundays, and holidays
Spring / Summer / Winter holidays
(Childcare is available even during long holidays)
Uniform Yes
School lunch Yes

44 Nijiro Hoikusho (Daycare inside the company)

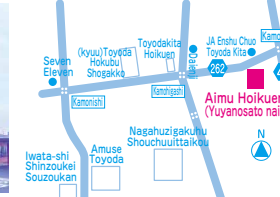
〒438-0838 Iwata-shi Kodateno 167-3
0538-33-8888 FAX 0538-33-8889
http://www4.tokai.or.jp/nijiro/



Administration Myth Co., Ltd. (Medical Corporation Keiseikai)
Number of children 33 children
(from the end of maternity leave to the end of the fiscal year when they are 3 years old)
* At the company's childcare facility, we will take care of employees' children and local children together.
Opening hours Weekdays 7:30 to 18:30
Saturdays and holidays desired childcare
Short-time childcare 9:00 to 17:00
School lunch Yes

45 Yuya no Sato Aimu Hoikuen (Daycare inside the company)

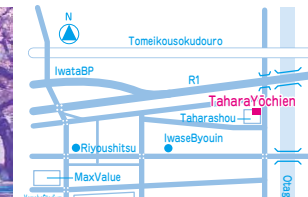
〒438-0804 Iwata-shi Kamo 395
0538-30-6100 FAX 0538-30-6330
http://www.hashoukai.or.jp



Administration Social welfare corporation Hasshoukai (Shakai Fukushi Hōjin Hasshō-kai)
Number of children 12 children
(from the end of maternity leave to the end of the fiscal year when they are 3 years old)
* Local children can also use it.
Opening hours Weekdays 7:30 to 18:30
1st and 3rd Saturdays desired childcare 8:30 to 17:30
Short-time childcare 8:30 to 16:30
School lunch Yes

50 Iwata Shiritsu Tahara Yōchien

〒438-0027 Iwata-shi Mikano 936-1
0538-35-3505 FAX 0538-36-3571
tahara-k@city.iwata.lg.jp

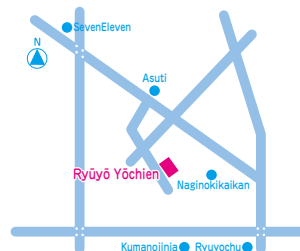


Administration Iwata City
Opening hours Weekdays 8:30 to 16:30 (Daycare: 14:00 to 16:30)
Closed on Saturdays, Sundays, and holidays
Spring / Summer / Winter holidays
(Childcare is available even during long holidays)
Uniform Yes
School lunch Yes



51 Iwata Shiritsu Ryūyō Yōchien

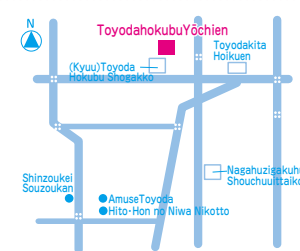
〒438-0231 Iwata-shi Toyooka6605-60
0538-66-5333 FAX 0538-66-8925
ryuyo-k@city.iwata.lg.jp



Administration Iwata City
Opening hours Weekdays 8:30 to 16:30 (Daycare: 14:00 to 16:30)
Closed on Saturdays, Sundays, and holidays
Spring / Summer / Winter holidays
(Childcare is available even during long holidays)
Uniform Yes
School lunch Yes

52 Iwata Shiritsu Toyoda Hokubu Yōchien

〒438-0804 Iwata-shi Kamo 1027-2
0538-36-0757 FAX 0538-36-0797
toyodahokubu-k@city.iwata.lg.jp

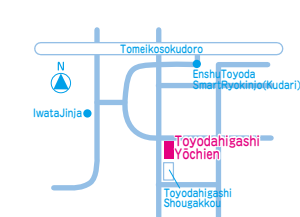


Administration Iwata City
Opening hours Weekdays 8:30 to 16:30 (Daycare: 14:00 to 16:30)
Closed on Saturdays, Sundays, and holidays
Spring / Summer / Winter holidays
(Childcare is available even during long holidays)
Uniform No **School lunch** Yes

※Scheduled to be privatized and integrated with Toyoda Kita Hoikuen in FY2026 [R8 nendo]
[Established by: Shakai Fukushi Hōjin Hamamatsu Jidō Fukushien]
Scheduled to open on April 1st, 2026 [R8 nen].

53 Iwata Shiritsu Toyoda Higashi Yōchien

〒438-0801 Iwata-shi Takamigaoka 65
0538-32-5279 FAX 0538-32-5321
toyodahigashi-k@city.iwata.lg.jp



Administration Iwata City
Opening hours Weekdays 8:30 to 16:30 (Daycare: 14:00 to 16:30)
Closed on Saturdays, Sundays, and holidays
Spring / Summer / Winter holidays
(Childcare is available even during long holidays)
Uniform No
School lunch Yes

54 Iwata Shiritsu Toyooka Minami Yōchien

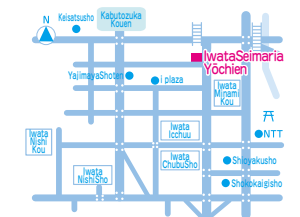
〒438-0115 Iwata-shi Kamikanzo 1410
0539-62-2544 FAX 0539-62-2509
toyookaminami-k@city.iwata.lg.jp



Administration Iwata City
Opening hours Weekdays 8:30 to 16:30 (Daycare: 14:00 to 16:30)
Closed on Saturdays, Sundays, and holidays
Spring / Summer / Winter holidays
(Childcare is available even during long holidays)
Uniform Yes
School lunch Yes
Drop-off and pick-up Bus transfer available

55 Iwata Sei Maria Yōchien

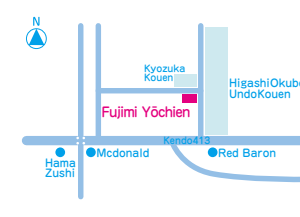
〒438-0077 Iwata-shi Kounodai 54-3
0538-32-5334 FAX 0538-32-7822
http://www.iwata-seimaria.ed.jp



Administration School Corporation Shizuoka Holy Mother Academy (Gakkō Hōjin Shizuoka Seibo Gakuen)
Opening hours Weekdays 8:00 to 17:30 (Daycare service: 14:30 to 17:30)
Closed on Saturdays, Sundays, and holidays
Spring, summer, and winter holidays
(Childcare service during long holidays 8:30 to 17:30)
Uniform Yes
School lunch Yes
Drop-off and pick-up Bus transfer available

56 Fujimi Yōchien

〒438-0083 Iwata-shi Fujimichou 1-4-4
0538-32-0751 FAX 0538-32-1054
http://www.fujimi-yo.jp/



Administration School corporation Fujimi Academy (Gakkō Hōjin Fujimi Gakuen)
Opening hours Weekdays 8:10 to 17:00 (Daycare at 14:30 to 17:00)
Closed on Saturdays, Sundays, and holidays
Spring / Summer / Winter holidays
(Childcare during long holidays 8: 30-16: 30)
Uniform Yes
School lunch Yes
Drop-off and pick-up Bus transfer available

Education and childcare benefit certification (Kyōiku Hoiku Kyūfu Nintei)

Those who wish their children to go to Yōchien, Hoikuen, Nintei Kodomoen, etc. must receive an 「Kyōiku · Hoiku kyūfu Nintei」.

1 Person Entitled

All children who are registered as residents in Iwata City and wish to use the facilities covered by the benefits, such as Yōchien, Hoikuen, Nintei Kodomoen, etc. are eligible.

2 Flow of Certification Procedure (new application)

■ Procedure (1): Please fill in the required items on the 「Kodomo no tame no hoiku · hoiku kyūfu nintei shinseisho ken hoikuen tō nyūen mōshikomi sho」 and submit these applications to the Yōchien Hoikuen ka.

■ Procedure (2): Based on the application in procedure (1), the city will determine the need for childcare and the required amount, and issue a certificate of provision.

3 Certification Categories (Shikyū Nintei)

Certification category	Target Children	Main places
1-gō nintei	Children over 3 years old who wish to have a kindergarten education Example) If your child is 3 years old or older and one of the parents is a full-time housewife (husband), and your child can receive childcare at home.	•Yōchien •Nintei Kodomoen (Yōchien vacancy)
2-gō nintei	Children over 3 years old who need childcare due to parents'/guardians' employment or illness. Example) If the child is over 3 years old and the parents/guardians are working together (or working as a single parent/guardian) or if the parent/guardian is sick and it is difficult to raise the child at home.	•Hoikuen •Nintei Kodomoen (Hoikuen vacancy)
3-gō nintei	Children under the age of 3 who need childcare due to parents'/guardians' employment or illness Example) If the child is under 3 years old and the parents/guardians are working together (or working as a single parent/guardian) or if the parent/guardian is sick and it is difficult to raise the child at home.	•Hoikuen •Nintei Kodomoen (Hoikuen vacancy) •Chiikigata Hoiku

Use of facilities, etc. benefit certification (Shisetsu-tō Riyō Kyūfu Nintei)

This is a necessary procedure for making free of charge the tuition fees for childcare at Yōchien, Azukari Hoiku of Nintei Kodomoen, Ninkagai Hoikuen, etc. Depending on the combination of facilities used, it may be necessary to obtain both education/childcare benefit certification and facility use benefit certification.

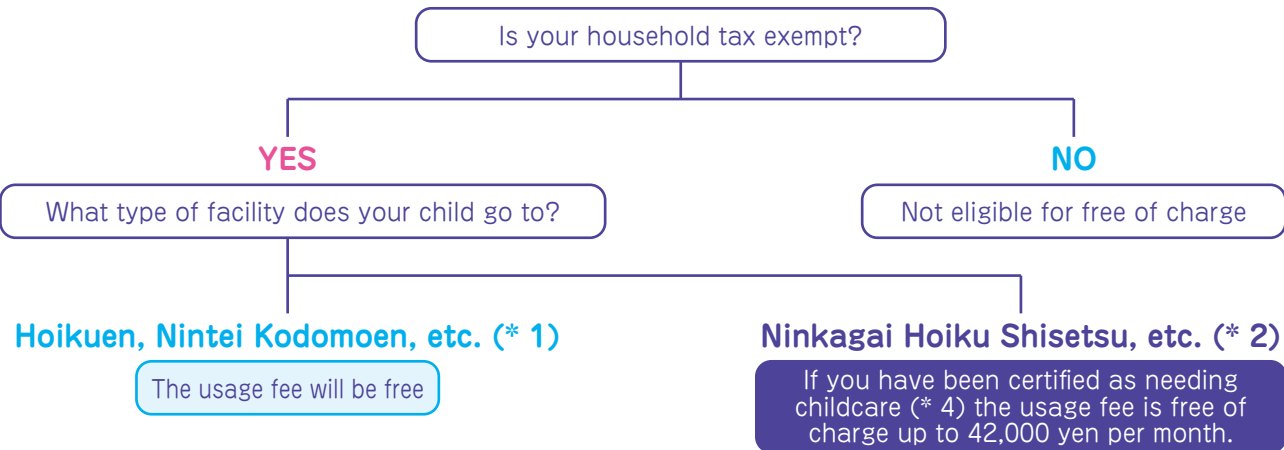
(Example) If you are using a Yōchien, etc. and Azukari Hoiku service, you will be certified as [1-gō nintei] for education and childcare benefits. The [shin 2-gō nintei] is for the facility use benefit certification. The [shin 3-gō nintei] is for children aged 3 years old.

Certification category	Child Class aged	Person entitled	Main places
Shin 1-gō nintei	3 to 5	Children who want Yōchien education	Kindergartens that do not receive institution-type benefits.
Shin 2-gō nintei	3 to 5	Children who need childcare because of their parents'/guardians' employment or illness	•Azukari Hoiku Service •Ninkagai Hoiku Shisetsu
Shin 3-gō nintei	0 to 2	Children in households exempt from municipal tax who need childcare due to their parents'/guardians' employment or illness	•Ichiji Azukari Service •Byouji/Byougoji Hoiku

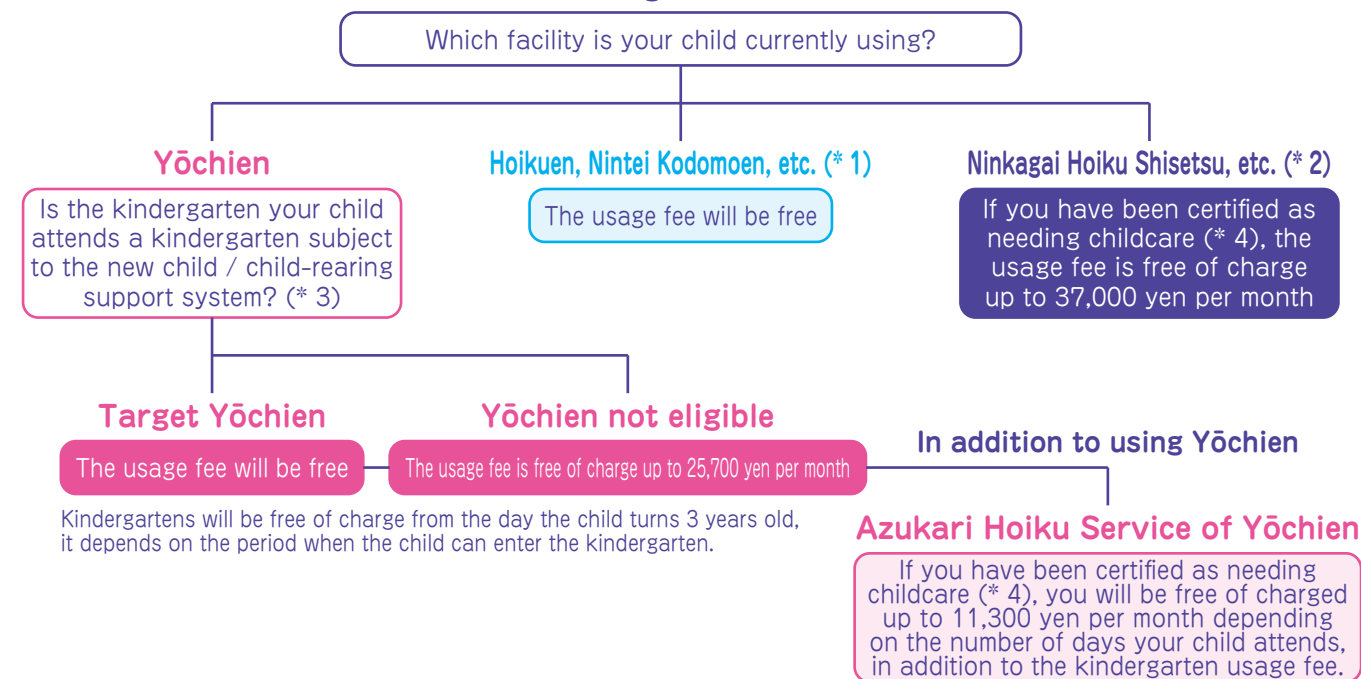
Early childhood education and childcare free of charge

What kind of support can you specifically receive in your home?

0 to 2 years old



3 to 5 years old



- From the perspective of reducing the burden on households with two or more children, we will continue the current system and count the oldest child who uses nursery schools, etc. as the first child, then for the second child aged 0 to 2 years old the fee will be half, and it will be free for the third and subsequent children. Furthermore, for households with an annual income of less than 3.6 million yen, the age of the first child does not matter.
- Parents/guardians will still be responsible for other fees such as transportation, food, and events. However, the cost of supplementary food (side dishes, snacks, etc.) is exempted for children in households with an annual income of less than 3.6 million yen and all households with three children or more.
- The usage fee is free of charge for preschool children with disabilities who use developmental support and are 3 to 5 years old.
- * 1 Community-based childcare (small-scale childcare, home-based childcare, home-visit childcare, on-site childcare) and company-led childcare (standard usage fee) are also eligible.
- * 2 In addition to unlicensed childcare facilities, temporary child daycare business, post-illness childcare business, and family support center business are eligible. Non-licensed childcare facilities refer to general non-licensed childcare facilities, local government-specific certified childcare facilities, babysitters, and non-licensed on-site childcare facilities.
Note: For unapproved childcare facilities, do not meet the government's standards for guidance and supervision of unapproved childcare facilities, usage fee are not subject to the free-of-charge system.
- * 3 If you're not sure what kind of kindergarten you are applicable to attend, please check with the kindergarten you want your child to attend or check with the Early Childhood Education and Care Division [Yōchien Hoikuen-ka].
- * 4 In order to be eligible for free of charge, it is necessary to receive "certification of the need for childcare" from the municipality where you live. Regarding the requirements for "certification of the need for childcare", there are requirements such as employment (requirements equivalent to the use of a licensed nursery school), so please check with the Early Childhood Education and Care Division.

About Azukari Hoiku Service (Azukari Hoiku Jigyō)

This is a service provided after the children finish the basic hours at public Yōchien or at public Nintei Kodomoen (Yōchien vacancy).

1 Target users

- When the child falls under any one of the following items and need childcare, you can use Azukari Hoiku.
- (1) When parents/guardians, etc. (people living with parents and children) are working or attending school
 - (2) When providing family outpatient care, nursing, or long-term care
 - (3) When hospitalizing or going to the hospital due to injury, illness or childbirth
 - (4) For school events
 - (5) Ceremonial occasion
 - (6) Due to other urgent matters (cannot be used for Parents rest)

2 Implementation date and time

Azukari Hoiku is provided when the preschool is open as well as during long period breaks.

Monday to Friday	Tsūjō nikka	From 2:00 pm (after the end of basic hours) to 4:30 pm
	Gozen nikka	From 11:00 am to 4:30 pm
Long period break (summer, winter, spring)		From 8:30 am to 4:30 pm

- * Please contact each Nursery, etc. for details.
- * During public kindergarten long holidays, please bring your own lunch box [obentō].
- * During the long holidays of public Nintei Kodomoen, school lunch will be provided upon request (from the summer vacation of 2025 (Reiwa 7) onwards).

3 Closed

- (1) Saturdays, Sundays and holidays
- (2) April 1, December 29-January 3, March 31
- (3) Others (about one week during the Obon festival, change dates of events, dates designated by each Nursery, etc.)

4 Charges

Azukari Hoiku (Per day use)	Childcare fee	450 yen per day
	Expenses	50 yen per day (snack fee)

About Childcare facilities - Ninkagai

[Ninkagai hoiku shisetsu] are those that fall under the Child Welfare Act licensed by the prefecture or city and it is a general term for facilities that take care of children (including those that are held at the caregiver's home and those with a small number of children). The content of childcare is different according to the facility.

No.	Name of Nursery, etc.	Vacancy	Address	Phone
1	Buddy Yōchisha	○	2179-1 Mitsuke	0538-37-5854
2	Tia Rosa	○	3592 Hitokoto	0538-36-3225
3	Colegio Aprendiz (Out of operation)	○	787-3 Nishikaizuka	0538-37-5870
4	Deus no Comando	○	403-1 Hiebara	090-9264-3026
5	Sorriso de Criança - Iwata School(Out of operation)	○	74-6 Nishinoshima	090-2576-6305
6	Siraume Toyooka Byōin Umenoko Hoikushitsu	×	183-1 Shimokanzo	0539-62-1601
7	Iwata Hospital Kosumosu Hoikuen	×	419-9 Okubo	0538-38-5038
8	Nihon Tabako Sangyō Tōkai Kōjō Hoikusho	×	78-3 Nishinoshima	0538-35-5111
9	Rock Field Co. Ltd. Shizuoka Factory - Kazaguruma no oka Hoikushitsu	×	2280 Shimonobe	0539-62-5700
10	Bear Kids Land	×	1342-2 Higashi Kaizuka	0538-30-6160
11	Creche Donguri	○	1935-2 Iwai Corp Renge II 1-1 / 1-2	090-8674-4157
12	Yakult Iwata Minami Center Hoikusho	×	2001-3 Shimohongō	0538-37-4951
13	Yamaha Wai Wai Land	×	13-7 Myōgajimahara	0538-32-9743
14	Ai Cube Hoikuen	○	2003-4 Tateno	0538-74-2500
15	JA Enshū Tokimeki Hoikuen	×	146-3 Toyoda	0538-35-0101
16	Entetsu Group Hoikuen Iwata	×	228-4 Torinose	0538-37-5811
17	Nanairo Hoikuen	○	3172 Kaketsuka	0538-66-5231
18	Sankusu Pippi Hoikuen	○	355 Miyanoishiki	0538-24-8885
19	Nobiyaka Well-Being Hoikuen	○	711-1 Shimomannō	0538-35-3777
20	Aubergine Hoikuen	○	98-1 Ryūyōnakajima	0538-66-0555
21	Mamamoko Kids Line (home visit type)	○	4772-12 Mitsuke	090-4868-0552
22	Happy Academy	○	4-6 Fujimidai 2nd floor	0538-31-7250
23	Hareruparuku Hoikuen	○	847-1 Kamiokada (Inside HARE Le PARC)	080-6092-4727
24	Takuji·Babysitter Yurarikko	○	Fukude Nakajima 736-2	070-9140-2716

- * For admission inquiries, please contact each facility directly.
- * Regional vacancy... It refers to vacancy in company-operated nursery schools for children that aren't children of employees in the company.

About Ichiji Azukari Service (temporary childcare)

This is a system for childcare required temporarily.(As a general rule, only on weekdays.)

- [Fee] Children over 3 years old 250 yen / hour
- Children under 3 years old 300 yen / hour * Meals fee according to the Nursery, etc.

[Nursery, etc. with this service]
Kōnotori Hoikuen, Izumi Hoikuen, Izumi Daini Hoikuen, Izumi Daisan Hoikuen, Nishikai Hoikuen, Kaze no Mori Hoikuen, Seirei Kodomoen Kōnotori Higashi, Kosodate Center Minamishima, Kosodate Center Tomigaoka, Seirei Kodomoen Kōnotori Toyoda, Seirei Kodomoen Kōnotori Tomigaoka, Iwata Kodomoen, Riiza Preschool, Toyoda Minami Hoikuen, Tatsunoko Yōchien, Noppo Hoikuen, Yuuai Hoikuen, Himawari Hoikuen.

- * Available period, day of the week, time, etc. will vary depending on each place.
- * Please contact each place for the operation status.
- * Regarding public nursery schools, there is an emergency childcare service that provides childcare when there is an urgent need for childcare due to illness, etc. at kindergartens where there is room available for acceptance.

For more information, please contact the Early Childhood Education and Care Division [Yōchien Hoikuen-ka].

About childcare for sick and post-illness children (Byōji Byōgoji Hoiku)

When it is difficult to take care of children who are ill or during their recovery time of illness in a group childcare setting and their parents/guardians cannot take care of them at home due to their work etc., these children are given childcare in a dedicated space.

- [Target children]
Infants who have an address in the city or children who are enrolled in elementary school and fall under any of the following.
 - When the child has an illness or the child is under a recovery period of illness and when a group childcare setting is difficult due to reasons such as ensuring rest.
 - When it is difficult to provide childcare at home due to the work of the parents/guardians, etc.
- Before using it, it is necessary to judge whether it is acceptable or not based on the diagnosis of a doctor.

- [Usage period]
Up to 7 days in principle at a time
- [Staff system]
Nurse, nursery schoolteacher
- [Burden amount]
1,000 yen a day (500 yen for half a day)
* There is a collection of the actual cost of food and drink, etc.

- [Registration reception]
If you have the possibility of using it, please register in advance at the facility.

- [Implementation facility]
Post-illness children: Kōnotori Hoikuen, Izumi Hoikuen, Izumi Daisan Hoikuen, Seirei Kodomoen Kōnotori Higashi, Kosodate Center Tomigaoka, Seirei Kodomoen Kōnotori Tomigaoka, “Tonbo” room for post-illness children (attached to Yuuai Hoikuen), “Mikan” room for sick and/or post-illness children (attached to Fujimi Kodomo Clinic), Nursery room for sick and post-illness children Melon
- Sick child:** “Mikan” room for sick and/or post-illness children (attached to Fujimi Kodomo Clinic)(TEL 0538-39-2237)
Nursery room for sick and post-illness children Melon(TEL 090-3238-2238)
※Please consult each facility for the implementation condition.

About Family Support Center

It can be used when childcare is required for various reasons, such as "I can't pick up my child due to overtime", "I need childcare to run errands", and "I want to have my own time once in a while". If you register as a member at the center, "Omakase (assistance) members" who have taken a training course will take care of your child.

- Contact:
51 Kamionogo, Iwata City
(Child-rearing Support Center Nobi Nobi)
TEL:0538-37-4102
FAX:0538-37-4103
E-mail:zf-famisapo@sis.seirei.or.jp

Usage fee (per hour)	
Weekdays	600 yen
Weekdays early morning (6:00 to 9:00)	700 yen
Weekdays late at night (19:00 to 21:00)	700 yen
Saturdays, Sundays, and holidays (year-end and New Year holidays)	800 yen

Nobinobi Child Raising General Support Center Temporary Child Care

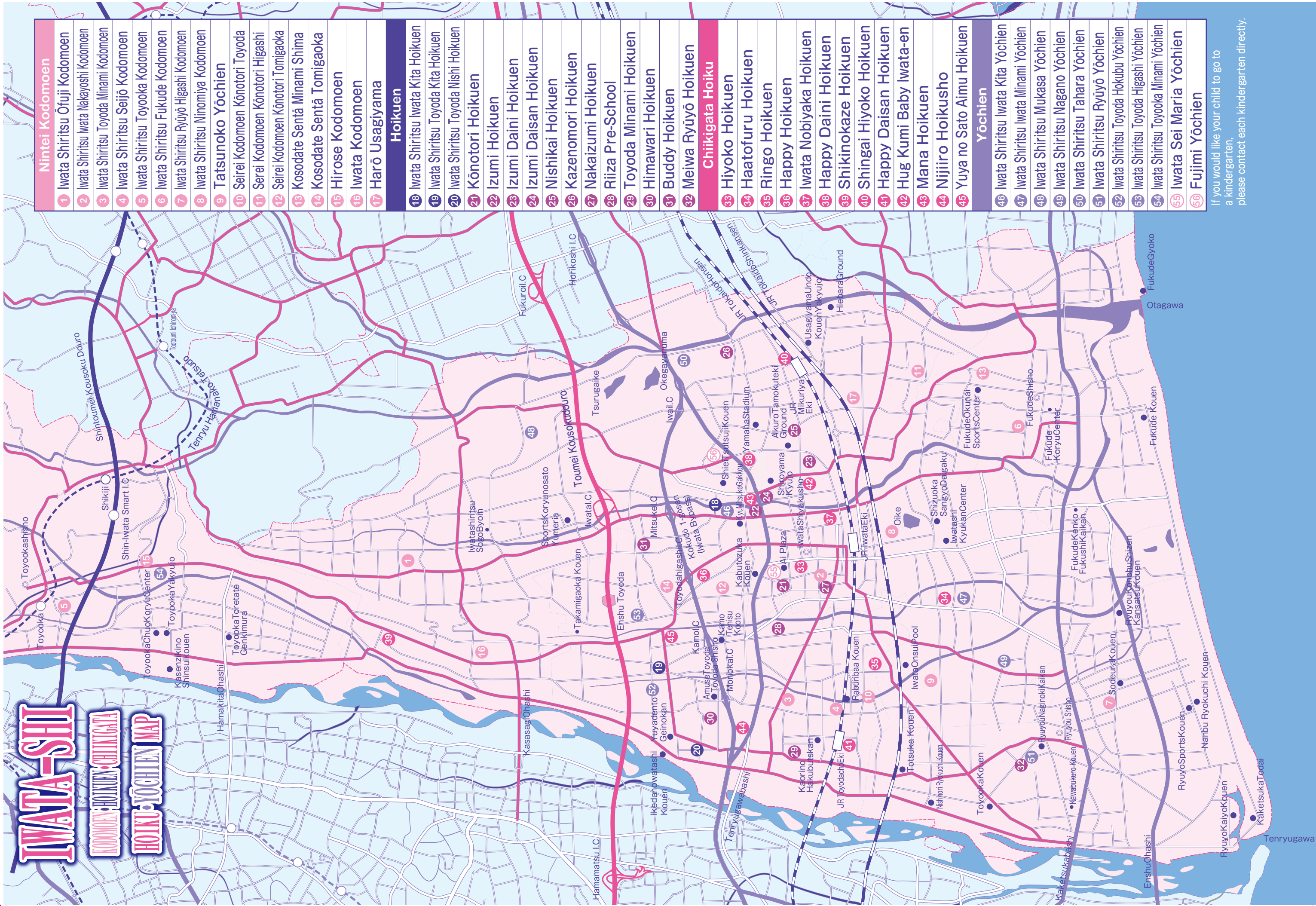
You can use it regardless of motive such as “Have errands to run”, “Need some time for myself away from my child” etc. It is possible to request through the phone as well.

- Contact:
Iwata-shi Kamiōnogō 51, next to Iwata City Emergency Center [Iwata-shi Kyūkan Center]
TEL:0538-37-4102
FAX:0538-37-4103
E-mail:zf-nobinobi@sis.seirei.or.jp
- <Availability> Opening days (except the fourthThursday of the month, New Year’s holiday)
- < A g e > From around 4 months old to before entering school age
- <Request for application> Opening days 9:30~17:30
- <Use hours> 9:30~17:30 (maximum 5 hours)
- < F e e > 600 yen per hour (after 1 hour, it will be charged every 30 minutes)
- <How to use> Reservation required (make a reservation by the day before the desired date)

IWATA-SHI

KODOMOEN HOIKUEN CHIHIKIGATA

HOIKU YŌCHIEI MAP



Nintei Kodomoen																	
1	Iwata Shiritsu Ōfuiji Kodomoen	2	Iwata Shiritsu Iwata Nakayoshi Kodomoen	3	Iwata Shiritsu Toyoda Minami Kodomoen	4	Iwata Shiritsu Seijō Kodomoen	5	Iwata Shiritsu Toyooka Kodomoen	6	Iwata Shiritsu Fukude Kodomoen	7	Iwata Shiritsu Ryūjō Higashi Kodomoen	8	Iwata Shiritsu Ninomiya Kodomoen	9	Tatsunoko Yōchien
10	Seirei Kodomoen Kōnotori Toyoda	11	Serei Kodomoen Kōnotori Higashi	12	Seirei Kodomoen Kōnotori Tomigaoka	13	Kosodate Sentā Minami Shima	14	Kosodate Sentā Tomigaoka	15	Hirose Kodomoen	16	Iwata Kodomoen	17	Harō Usagiyaama		
Hoikuen																	
18	Iwata Shiritsu Iwata Kita Hoikuen	19	Iwata Shiritsu Toyoda Kita Hoikuen	20	Iwata Shiritsu Toyoda Nishi Hoikuen	21	Kōnotori Hoikuen	22	Izumi Hoikuen	23	Izumi Daini Hoikuen	24	Izumi Daisan Hoikuen	25	Nishikai Hoikuen	26	Kazenomori Hoikuen
27	Nakaizumi Hoikuen	28	Riiza Pre-School	29	Toyoda Minami Hoikuen	30	Himawari Hoikuen	31	Buddy Hoikuen	32	Meiwa Ryūyō Hoikuen			Chiikigata Hoiku			
33	Hiyoko Hoikuen	34	Haatofuru Hoikuen	35	Ringo Hoikuen	36	Happy Hoikuen	37	Iwata Nobiyaka Hoikuen	38	Happy Daini Hoikuen	39	Shikinokaze Hoikuen	40	Shingai Hiyoko Hoikuen	41	Happy Daisan Hoikuen
42	Hug Kumi Baby Iwata-en	43	Mana Hoikuen	44	Nijihiro Hoikusho	45	Yuya no Sato Aimu Hoikuen			Yōchien							
46	Iwata Shiritsu Iwata Kita Yōchien	47	Iwata Shiritsu Iwata Minami Yōchien	48	Iwata Shiritsu Mukasa Yōchien	49	Iwata Shiritsu Nagano Yōchien	50	Iwata Shiritsu Tahara Yōchien	51	Iwata Shiritsu Ryūyō Yōchien	52	Iwata Shiritsu Toyoda Hokubu Yōchien	53	Iwata Shiritsu Toyoda Higashi Yōchien	54	Iwata Shiritsu Toyooka Minami Yōchien
55	Iwata Sei Maria Yōchien	56	Fujimi Yōchien														

If you would like your child to go to a kindergarten, please contact each kindergarten directly.

IWATA-SHI KODOMO KENSHŌ

[Iwata City Children's Charter]
[Established in April 2015]

IWATA NO DAICHI WO FUMISHIME TOMO NI TE WO TSUNAGI ASU WO TANOSHIMI NI TAKUMASHIKU IKIYŌ

〈 Let's build a solid foundation in Iwata,
hold our hands together and
live with optimism and courage. 〉

KODOMO-TACHI NO SUKOYAKANA
SEICHŌ WO HAGUKUMU TAME NI,
ŌRU IWATA DE
TORIKUMIMASHŌ.

〈Let's all work together in Iwata
to foster the healthy growth
of our children.〉



MIRAI E TSUNAGU MINNA NO KOKOROE. 〈Rules for everyone to build a better future.〉

- 🐾 KAKEGAI NO NAI INOCHI WO TAISETSU NI SHIYŌ.
〈Let's cherish our irreplaceable lives.〉
- 🐾 AISATSU WO SHIYŌ, AISATSU WO KAESŌ.
〈Let's greet each other and return greetings.〉
- 🐾 TAGAI WO UKEIRE, MITOMEAŌ.
〈Let's accept and recognize each other.〉
- 🐾 [ARIGATŌ] WO TSUTAEYŌ.
〈Let's show our gratitude saying "Thank you!" .〉
- 🐾 HITO WO UYAMAI, REIGI • REISETSU WO ISHIKISHITE KŌDŌ SHIYŌ.
〈Let's treat people with respect, good manners and courtesy.〉
- 🐾 KEITAI • SUMAHO NO TSUKAIKATA WO KANGAEYŌ.
〈Let's think about how we use our cellphone and smartphone.〉
- 🐾 HON WO YOMŌ, YOMI KIKASŌ.
〈Let's read books and have someone reading picture books for us.〉
- 🐾 KAZOKU NI KANSHA SHI, TASUKEAŌ.
〈Let's be grateful to our family and help each other out.〉
- 🐾 GOHAN NO TOKI WA TEREBI WO KESŌ.
〈Let's turn off the TV during meals.〉
- 🐾 SEKKYOKUTEKI NI CHIIKI GYŌJI NI SANKA SHIYŌ.
〈Let's actively participate in community events.〉
- 🐾 YUME WO MOCHI, JIBUN NO KANŌSEI WO SHINJIYŌ.
〈Let's have dreams and believe in our potential.〉
- 🐾 CHŌSEN SURU IYOKU TO YŪKI WO MOTŌ.
〈Let's have motivation and courage to face challenges.〉

Iwata City Hall Website "Child-rearing/Education「子育て・教育」"

Information on childbirth and child-raising, as well as information on nursery schools and kindergartens and others are available.

http://www.city.iwata.shizuoka.jp/kosodate_kyouiku/index.html

